

Products



SINCE OUR INCEPTION IN 1993, WE HAVE GAINED LOTS OF EXPERIENCE IN DEVELOPMENT AND PRODUCTION OF YACHT COMPONENTS.

DUE TO OUR DRIVE TOWARDS PERFECTION AND OUR WILLINGNESS TO ALWAYS FIND THE BEST SUITED PRODUCT FOR ALL OUR CLIENTS DESIRES, WE HAVE NEVER STOPPED DEVELOPING AND IMPROVING OUR PRODUCT RANGE.

CONCERNING TECHNOLOGICAL IMPROVEMENTS AND OPTIMIZING THE QUALITY, ALMAR IS CONSEQUENTLY LOOKING FOR NEW STANDARDS. SHOULD OTHERS ANCHOR IN THE HARBOR. ALMAR GROWS WITH THE CHALLENGE AND IS WELL PREPARED FOR THE FUTURE.

CONSTANT FURTHER DEVELOPMENTS PROVIDE THE HIGHEST STANDARDS OF OUR PRODUCTS AND BRING MAXIMUM BENEFITS FOR CUSTOMERS.

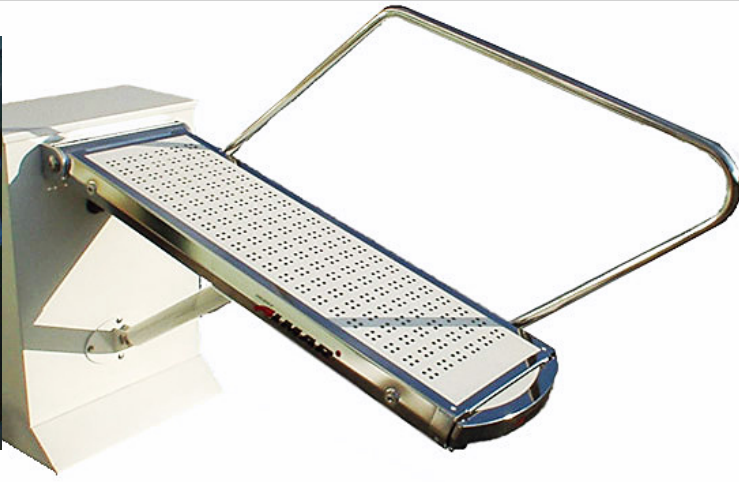
ALMAR – a Label of *GASTL GmbH*

A-6250 Kundl • Luna 67 • AUSTRIA
phone: +43 (0)5332 72373 • fax: +43 (0)5332 76496
email: office@almar.co.at • web: www.almar.co.at

Teleskopische Gangways



Applikationen



Telescopic gangway with 4-channel radio remote control, self-supporting

All movements fully hydraulic (up/down, in/out)

Saltwater resistant, monolithic cross-section made of stainless steel with electro polished gloss surface

Tread of white, easy to clean anti-slip surface

Stable railing, which can be mounted either on the right or left side of the gangway

Hydraulic unit with 12/24V power supply

Control panel can be mounted stationary

type	length in/out	width	weight	dinghy
GTL 42-230	2300/1250 mm	400 mm	52 kg	120 kg
GTL 42-270	2700/1600 mm	420 mm	82 kg	280 kg
GTL 47-310	3100/1800 mm	470 mm	120 kg	400 kg

Optional equipment:

Automatically retractable rope railing

Customized front panel

Coating of metal parts in the desired RAL color

Teak, resin or varnished plywood tread

Hydraulic power unit with increased performance

Hydraulic power unit with manually operated pump

Dinghy lifting device

Rotating Gangways



applications



Rotating telescopic gangway with 6 channel remote control, self-supporting

All movements fully hydraulic (turning, up/down, in/out)

Saltwater resistant, monolithic cross-section made of stainless steel, electro polished gloss surface

Tread of white, easy to clean anti-slip surface

Stable railing, which can be mounted either on the right or left side of the gangway

Hydraulic unit with 12/24V power supply

Control panel can be mounted stationary

Standard rotating range is possible between 120° to 180°

type	length in/out	width	weight	dinghy
GTL 42-230 D	2300/1250 mm	400 mm	105 kg	120 kg
GTL 42-270 D	2700/1600 mm	420 mm	140 kg	200 kg
GTL 47-310 D	3100/1800 mm	470 mm	220 kg	300 kg

Optional equipment:

Automatically retractable rope-railing

Coating of metal parts in the desired RAL color

Teak, resin or varnished plywood tread

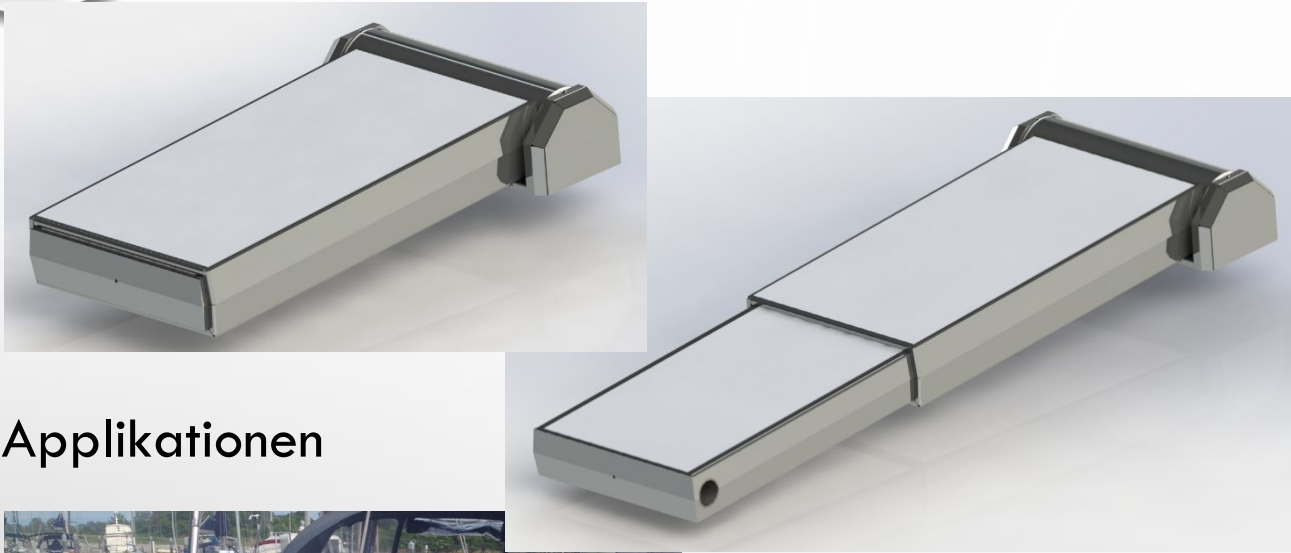
Hydraulic power unit with increased performance

Customized front panel

Hydraulic power unit with manually operated pump

Dinghy lifting device

Gangways with Compact Rotator



Applikationen



Rotating telescopic gangway with 4-channel radio remote control, self-supporting

All movements fully hydraulic (turning, up/down, in/out)

Saltwater resistant, monolithic cross-section made of stainless steel, electro polished gloss surface

Tread of white, easy to clean anti-slip surface

Hydraulic unit with 12/24 V power supply

Control panel can be mounted stationary

Small mounting area of 700 x 200 mm

type	length in/out	width	turing angle	weight	direct load	Jet ski on supporting bar
GTL58/160CR	1550/960 mm	580 mm	180°	112 kg	500 kg	200 kg
GTL45/160CR	1550/960 mm	450 mm	120°	92 kg	500 kg	200 kg

Optional equipment:

Pluggable, stable railing made of stainless steel

Coating of metal parts in the desired RAL color

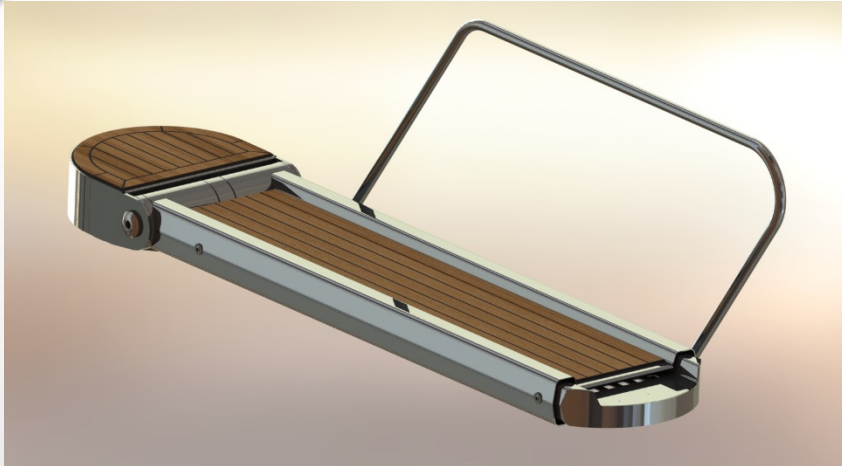
Teak imitation single-sided or double-sided tread

Hydraulic power unit with increase performance

Hydraulic power unit with manually operated pump

Jet ski / dinghy retaining staff

Rotating Gangways with Compact Rotator



Rotating telescopic gangway with 6 channel remote control, self-supporting

All movements fully hydraulic (turning, up/down, in/out)

Saltwater resistant, monolithic cross-section made of stainless steel with electro polished gloss surface

Tread of white, easy to clean anti-slip surface

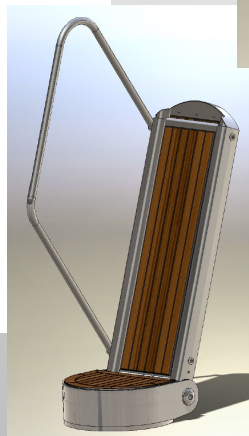
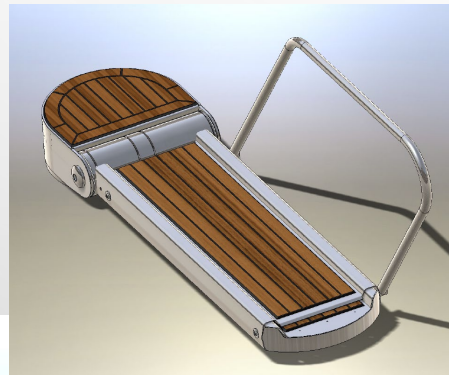
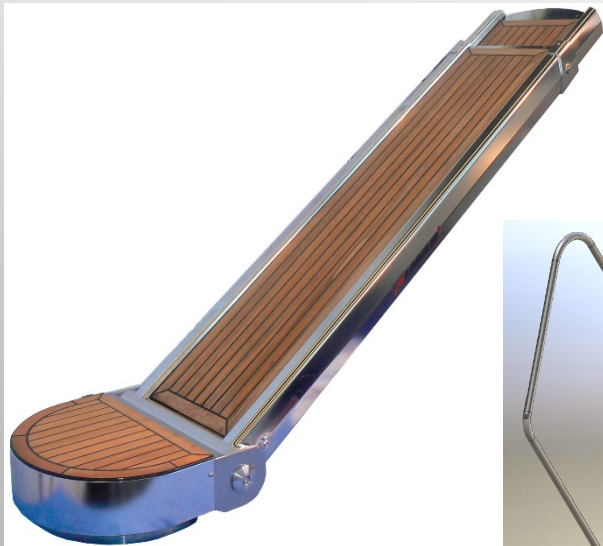
Stable railing, which can be mounted either on the right or left side of the gangway

Hydraulic unit with 12/24V power supply

Control panel can be mounted stationary

Rotation range is 120°

applications



type	length in/out	width	swivel angle	weight	dinghy
GTL42/230DCR	2120/1250 mm	400 mm	90°	165 kg	250 kg
GTL42/270DCR	2700/1600 mm	420 mm	90°	175 kg	250 kg
GTL47/310DCR	3100/1800 mm	470 mm	90°	203 kg	220 kg

Optional equipment:

Automatically retractable rope railing

Coating of metal parts in the desired RAL color

Teak, resin or varnished plywood tread

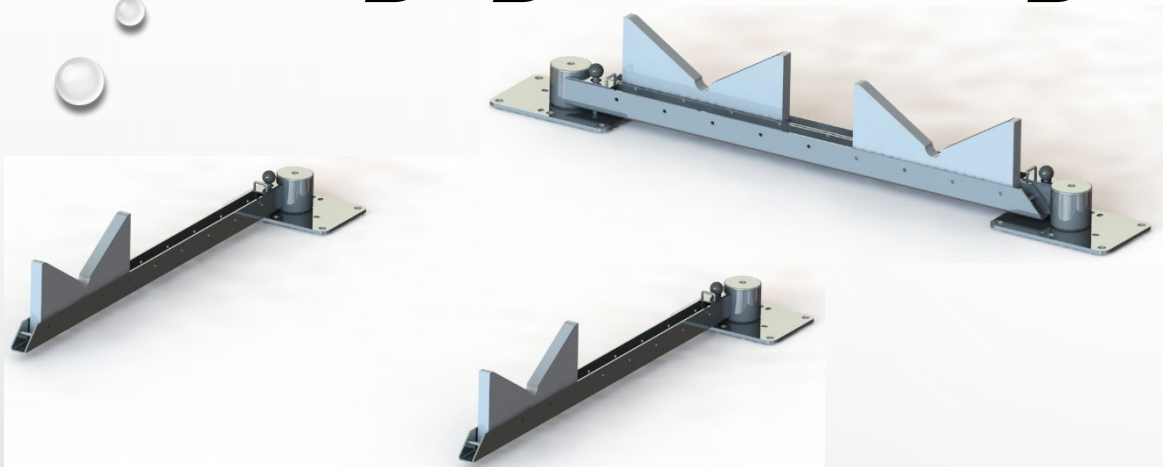
Hydraulic power unit with increased performance

Hydraulic power unit with manually operated pump

Dinghy lifting device

Customized front panel

Dinghy Restorage



applications



For placing and securing of the dinghy on the bathing platform
PVC insert is adjusted to the dinghy hull

Installation on the bathing platform or at the stern of the ship

Each swivel arm can hold a load of 200 kg

In swiveled out position, additional support on the bathing platform is required

Made of stainless steel and electro polished gloss surface

Optimal combination to an ALMAR gangway

type	length	arm width	weight	Load capacity
BA-M	1200 mm	45 mm	27 kg	200 kg
BA-M	1000 mm	45 mm	25 kg	200 kg
BA-M	800 mm	45 mm	23 kg	200 kg

Optional equipment:

Hydraulically turnable dinghy restorage

Coating of metal parts in the desired RAL color

Plastic inserts for dinghy – can be cut out in shape

Cranes



applications

Hydraulic crane with 6 channel remote control on coiled cord

All movements fully hydraulic (turning, up/down, rope in/out)

Saltwater resistant, monolithic cross-section made of stainless steel with coated surface

Hydraulic wire cord hoist with exact cord guide for long operating life

Hydraulic unit with 24V power supply

Standard rotation range is 180°

Stable screw drive for rotation, produced in a stainless steel/brass finish

Central supply of the hydraulic hose system

Connection to the base with screws onto the base plate

type	Crane arm length	height	length of cord	weight	lifting load
DK 25/210	2100 mm	400 mm	5000 mm	75 kg	250 kg
DK 45/250	2500 mm	500 mm	5000 mm	180 kg	450 kg
DK 60/300T	1750/2950 mm	560 mm	5000 mm	203 kg	450 kg

Optional equipment:

Manual rotation Coating of metal parts in the desired RAL color.

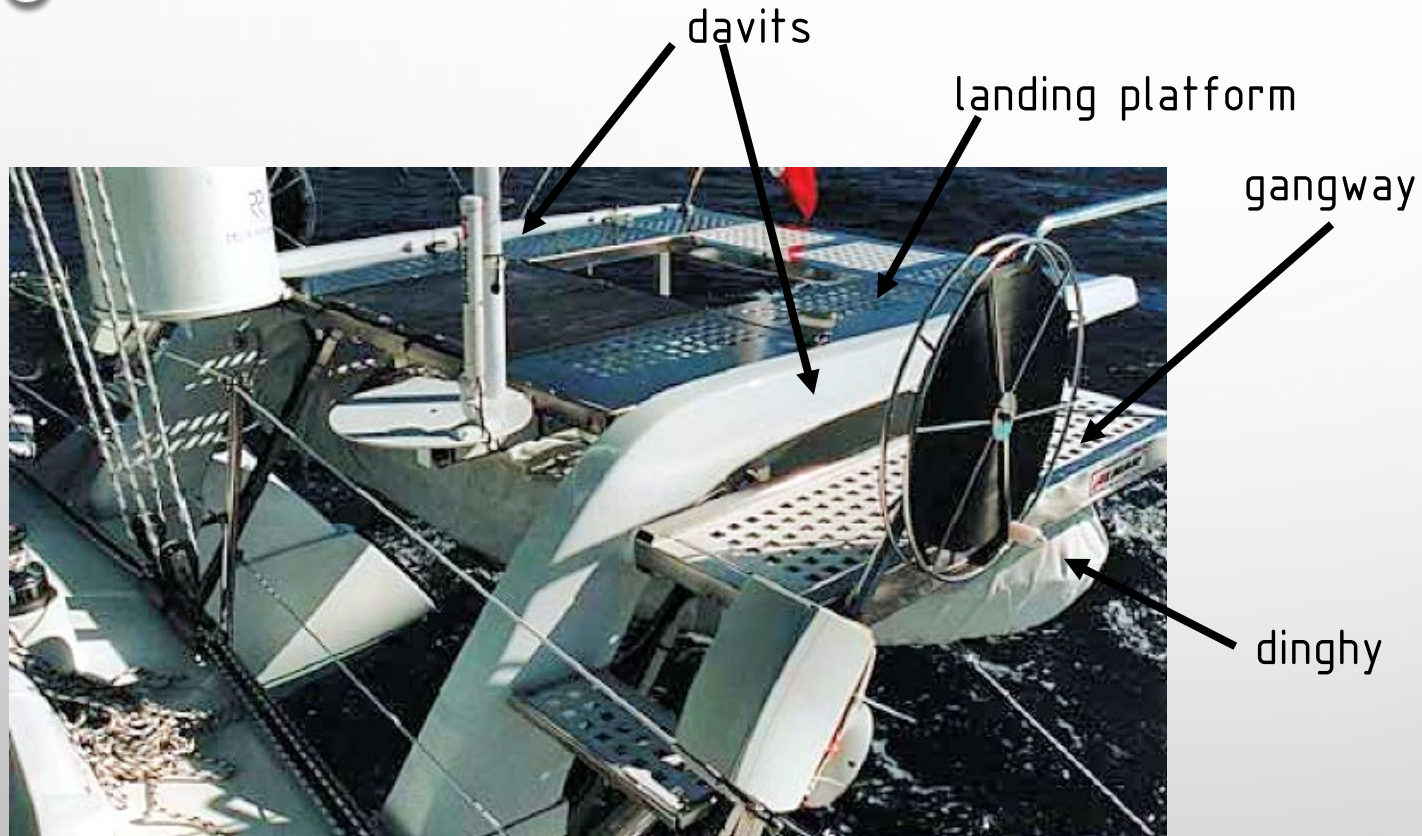
Hydraulic power unit with increased performance

Hydraulic power unit with manually operated pump

Hydraulic unit with 12 V power supply

Telescopic crane with protective cover

Special Projects



Helicopter landing site:

Lifting dinghy with davits

Landing site for two-man helicopter
Locking mechanism by radio remote control

Additional mechanical fixation for boat trips

Tread of anti-slip surface

Hydraulic power unit with increased performance

Gangways left and right of the platform

Address and Directions

